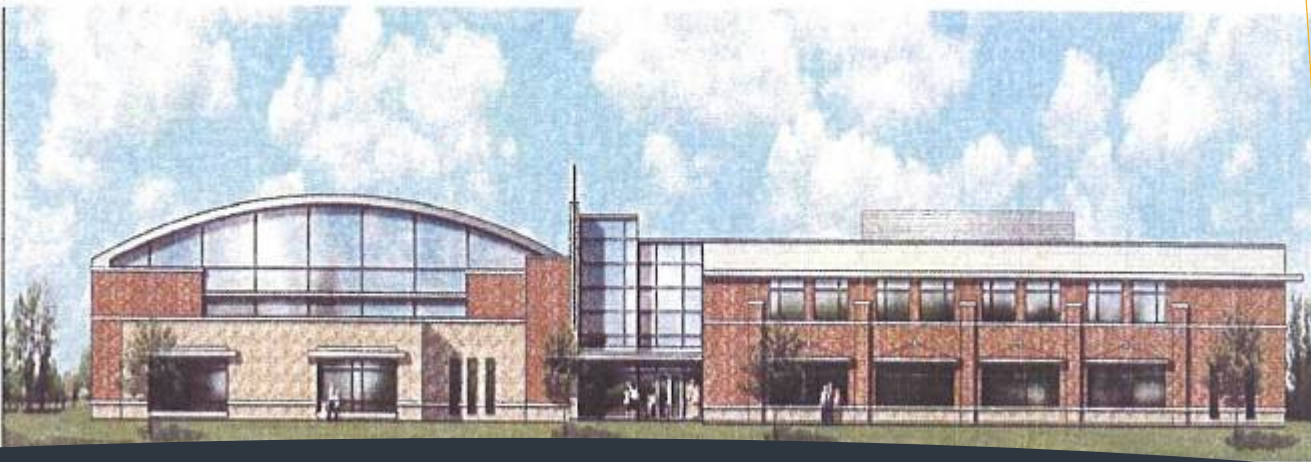




Facility Rental Information



Citizens Park

511 Lake Zurich Rd.
Barrington, IL 60010

Columbus Park

133 Lakeshore Dr.
Barrington, IL 60010

Langendorf Park

235 Lions Dr.
Barrington, IL 60010

Miller Park

Russell & Summit
Barrington, IL 60010

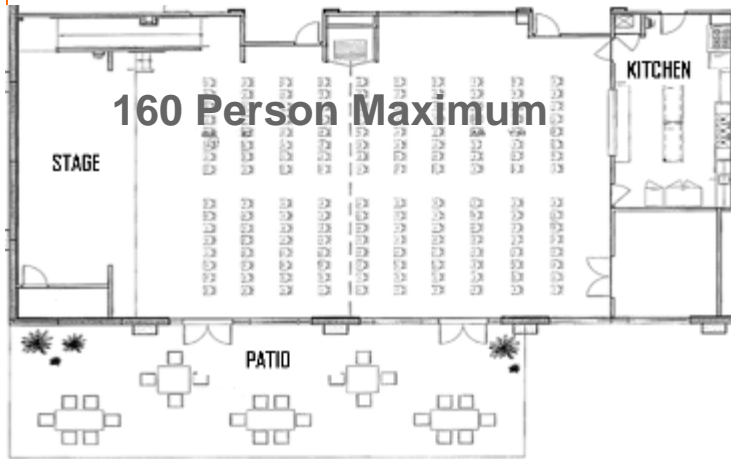
Ron Beese Park

50 Rotary Dr.
Barrington, IL 60010

HIGHLIGHTS

- Contact Information
- Facility Amenities
- Floor Plans
- Rental Facility Profile
- Rental Fees
- Room Capacity
- Rules and Regulations

Barrington Room



160 Person Maximum

Includes:

- Electric
- Heat/Air Conditioning
- Catering Kitchen Access
- Stage
- Patio Access
- Full Audio Visual

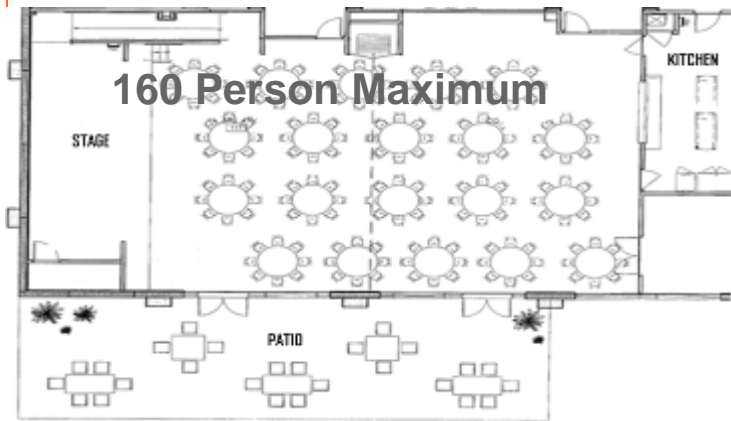
Capacity:

160 Person Maximum
(Divisible)

Cost:

- R: \$150 per hour
- NR: \$175 per hour
- NPO: \$165 per hour

Theater Seating



160 Person Maximum



Round Seating

Fitness &
Recreation
Center

MULTI-PURPOSE A/B

The multi-purpose room can be used for special events, corporate retreats, presentations, birthday parties, and customized BPD parties and much more!

- R: \$125 per hour
- NR: \$150 per hour
- NPO: \$140 per hour



GYMNASIUMS A/B

The double gym is an amazing space perfect for all of your sport related parties, team practices, or just a big area to run, run, run!

- R: \$55 per hour/ per gym
- NR: \$80 per hour/ per gym
- NPO: \$65 per hour/ per gym



BATTING CAGES/ INDOOR GOLF *(Langendorf Center)*

Come take some swings in our new, retractable, batting cages. Cages are open to both individuals as well as athletic teams.

- R: \$55 per hour/per cage
- NR: \$80 per hour/per cage



Jewel Tea Pavilion

The Jewel Tea Pavilion at Citizens Park is perfect for weddings, receptions, bridal/baby showers, and more. It can be used year round; it is both heated and cooled and comes complete with a wood burning fireplace! The Pavilion also has the ability to become a fully open-air space with state-of-the-art retractable glass doors. It also boasts a full service catering kitchen



Includes:
Electric
Heat
Air Condition
Catering Kitchen
Wood Fireplaces

Capacity:
100 Chairs
13 Tables
110 Person Max

Cost:
R: \$75/hour
NR: \$100/hour
NPO: \$90/hour



The Lodge

The Lodge is a great year round space for small events like meetings or birthday parties.

Includes:
Electric
Heat/Air Condition
Wood Burning Fireplaces

Capacity:
30 Person Maximum

Cost:
R: \$60/hour
NR: \$85/hour
NPO: \$75/hour



Robert Soule Amphitheater

The beautiful Amphitheater is perfect for concerts or stage gatherings*

Includes:
Electric

Capacity:
N/A

Cost:
R: \$50/hour
NR: \$75/hour
NPO: \$65/hour

Sound Amplification Permits may be REQUIRED

Reservations may be made during the months of April 1 — November 1



Pepper Family Tree House

The Tree House is ideal for kids' birthday parties or small gatherings

Includes:
Electric

Capacity:
30 Chairs
3 Tables
30 Person Maximum

Cost:
R: \$75/hour
NR: \$100/hour
NPO: \$90/hour



North/South Shelter

Includes:
N/A

Capacity:
40-50 Persons

Cost (per day):
1 to 75 = \$100
76 to 200 = \$150
201 to 400 = \$350

The North and South Shelter are available for rent on weekdays/weekends. During the months of June through August, they are available on weekends only.

Includes:
N/A

Capacity:
N/A

Cost:
R: \$35/hour
NR: \$50/hour
NPO: \$40/hour

The Gazebo is a wonderful spot for weddings or family photos, or small, intimate gatherings.



John Larkins Bell Gazebo

Citizens Park



Park and Recreation Facilities

Aqualusion Water Park

Langendorf Park

235 Lions Dr., Barrington, IL 60010

Ideal for group-oriented gatherings and parties, offering a 2 flume slides, 2 drop slides, a diving board, and much more. The entire water park is available to rent Monday through Sunday between the times of 8-9:30pm. There will be a maximum of 300 participants per private party.

Pool Lawn A & B

Aqualusion Water Park

235 Lions Dr., Barrington, IL 60010

Pool lawn may be rented Monday through Sunday during open swim hours (12-8pm). Lawns are rented on a **2-hour minimum** basis. No alcoholic beverages or glass containers allowed.

Golf Course

Langendorf Park

*Off Carl Ave., 2 blocks West of Rt. 59
Barrington, IL 60010*

Gather a group of friends and coordinate a golf outing with our 5-hole, par 3 golf center. Course is available for rental when not being used by Park District Programs.

Sand Volleyball Courts

Behind Aqualusion Water Park

235 Lions Dr., Barrington, IL 60010

Courts are available for rental when they are not being used by Park District Programs. Court lights available.

Athletic Fields

Langendorf & Ron Beese Park

235 Lions Dr., 50 Rotary Dr.

Barrington, IL 60010

Various baseball, football, and soccer fields are available for rent for team practices, games, and special events. Fields are available for rental when they are not being used by Park District Programs.

Shelters F, H & N

Langendorf Park

235 Lions Dr., Barrington, IL 60010

Enjoy the large shaded picnic area near playgrounds and baseball fields. Ideal for family reunions, birthdays, and big gatherings. Groups of 400 can be accommodated.

Miller Park

Corner of Russell & Summit

Barrington, IL 60010

Two playgrounds, one handicap accessible, and limited picnic groves

Scout Cabin

Miller Park

Corner of Russell & Summit

Barrington, IL 60010

Nestled in the middle of Miller Park, this cozy cabin offers an intimate space for meetings, reunions, and troop meetings. To secure a scout rental, email Claire Leininger at Claire.Leininger@gmail.com

Teams Course

Ron Beese Park

50 Rotary Dr., Barrington, IL 60010

A series of outdoor events and initiatives designed to promote group effectiveness and cooperation. With the guidance of a trained facilitator, participants are challenged and encouraged to reinforce the importance of working together as a



TEAMS COURSE

Miscellaneous Equipment

Available through Langendorf Park

235 Lions Dr., Barrington, IL 60010

Equipment available to make your rental complete.

- 2- 3'x6' large grills
- 1- small grill
- 1- 20x30 tent

Available at picnic areas only from April 1-November 1.

Tables/Chairs provided with all indoor rentals.

Rental Information And Policies

DEPOSITS AND RESERVATIONS

- Rentals will not be reserved without full payment, maintenance deposit, and renter's signature on the contract. **Renters Must be 25 years or older.**
- There is a \$100 maintenance deposit on the Barrington Room, Gym, Pavilion, The Lodge, and Pepper Family Treehouse.
- Renter is responsible for cleaning the kitchen and all equipment used during rental. All rooms must be left in the same condition they are found.
- Renter must stay until their entire party has departed. Renter is responsible for the conduct of the people admitted and for any damage and negligent breakage that occurs during the rental.
- **If there is damage to the room or Park District property, or the room is not left in the same condition in which it was found, the \$100 maintenance deposit will be forfeited. Last minute or day-of facility changes to your rental will incur additional fees.**
- Rental of the building does not include rooms not specified on this application, nor does it include park district equipment, except as included in the application.
- Rental of the building does not include park personnel, except for basic room set-up.
- Use of any equipment, other than that furnished with facilities rented above, must have prior approval, and under no circumstances may equipment be moved by anyone other than a building supervisor.
- If anyone requests to rent a facility for a program that the park district currently offers, the Barrington Park District reserves the right to deny the rental due to conflict of interest.
- A 10% service charge will be deducted from all refund requests.

PICNIC SHELTER AND GROVE RULES AND REGULATIONS

- Picnic reservations are required to secure a picnic shelter and grove.
- The number of people attending the picnic determines the fee. Fees are to be paid upon application.
- The number of people attending the party at the time of application will determine the tables assigned to the location. All other picnic tables are reserved for other areas and cannot be removed from adjoining picnic groves.
- Because of high liability risk, unusual play or 'Carnival' devices cannot be brought into picnic areas without special permission of the Superintendent of Parks and Facilities. All approved requests must accompany a certificate of insurance naming the Barrington Park District as additionally insured.
- Motorized vehicles are not allowed on turf areas or equipment access roads in the picnic area.
- Abusive language or conduct to other park users or Park District staff will not be tolerated and will result in person or persons involved being asked to leave park grounds.
- Parking — the main parking lot is designated primary for access to the pools and Langendorf Center. The picnic parking lot south of the pools is designated for the picnic groves and shelters.
- Refunds will only be given if a cancellation occurs due to inclement weather. 10% service fee waived.
- **General Rules above also apply**

ALCOHOL/SMOKING POLICY

- **No alcohol is permitted in any Park facility except for the Barrington Room, Jewel Tea Pavilion, and the Lodge. Special procedures, application, and fees are required. Failure to adhere to this policy forfeits your deposit check and criminal charges may apply.**
- No Smoking in any building

RENTAL HOURS

- The Langendorf Center closes at 10:pm. Room rental after 10:30pm will result in additional fees.
- The Lodge and the Pavilion at Citizens park, as well as all rooms in the Langendorf Center, may be reserved from 9:00am — 10:30pm
- Outdoor facilities (shelters, Treehouse, etc) may be rented between hours of 9:00am — dusk

GENERAL RENTAL REGULATIONS

- No animals permitted on Park District grounds.
- No lighting effects employing actual fire are to be used. This prohibits the use of candles, lighted lanterns, or torches, etc.
- No confetti, glitter, flower petals, silly string, etc.
- No wax or abrasive material may be used on the floors of any indoor rooms.
- **The Barrington Park District is not responsible for damage to or loss of personal property or for any injuries that may occur to renters or their attendees.**
- Nothing shall be sold, given, exhibited, or displayed without permission.

FOR MORE INFORMATION ON RENTING A FACILITY CONTACT:

Barrington Park District

Jamie Dioguardi

847-304-5276

jdio@barringtonparkdistrict.org